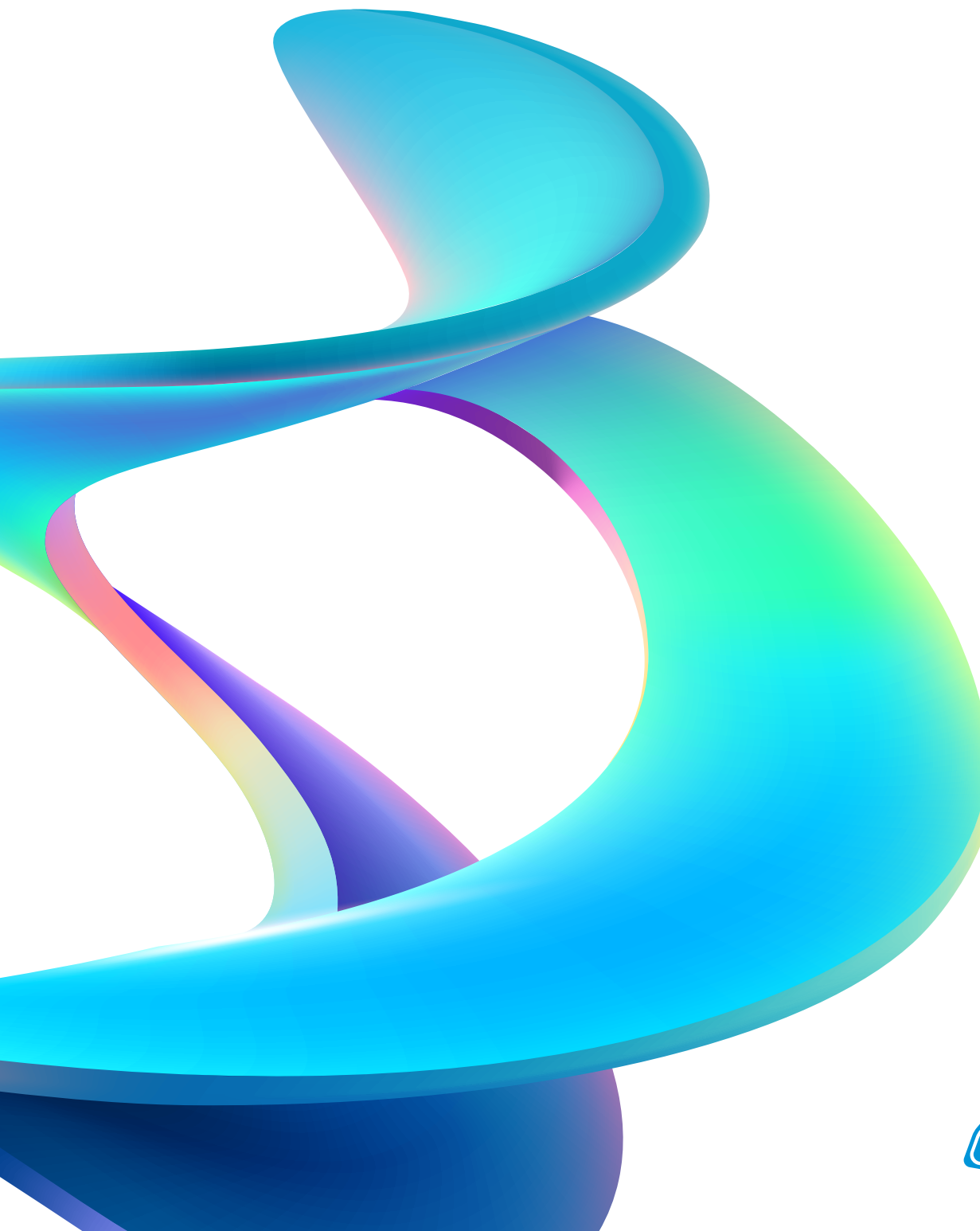


Another Originality

# CORPORATE PROFILE



# Stability and Development

---

## Contents

---

- 03 Corporate Identity
- 04 Company Philosophy
- 06 Company Overview · History
- 08 Mission · Core Values · KORLOY People
- 10 Global Business Network
- 12 R&D · Total Tooling Solution
- 16 Products
- 20 Industry Applications
- 24 Special Industry Applications
- 28 ESG (Corporate Sustainability Management)



## Corporate Identity

KORLOY is a combination of "Korea" and "Alloy". KORLOY launches a new era of unprecedented promise by building on our culture of excellence and innovation to lead the global carbide-cutting tool industry.

---

### Outer triangle

Stability and development

### Each side of the triangle

Customer / Human / Rationality

### Inner triangle

Will to achieve the goal

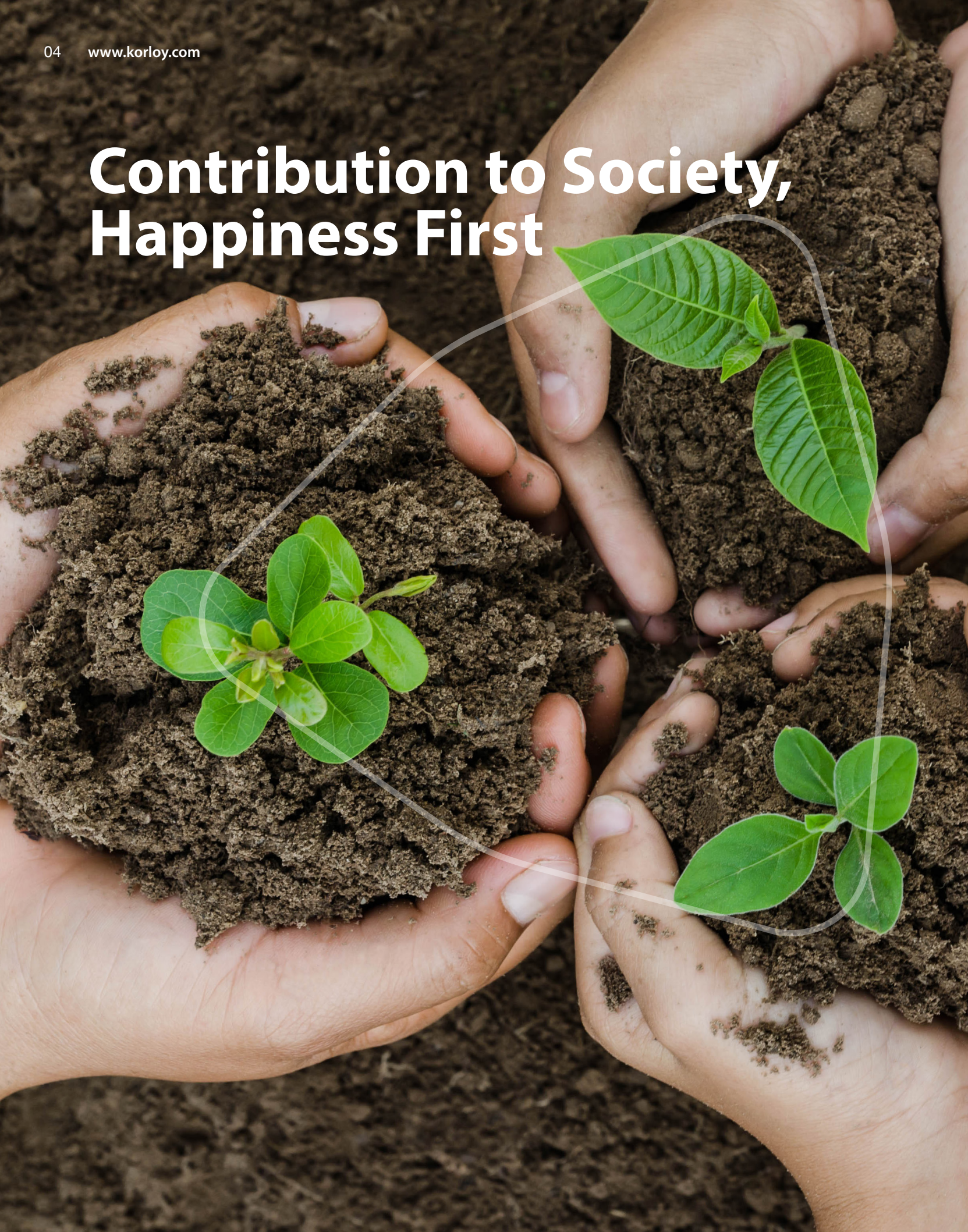
### Core circle

Solidarity within KORLOY

---



# Contribution to Society, Happiness First







## Founding Principles

---

### Contribution to Society

KORLOY contributes to society and improves the world by manufacturing needed products, creating job opportunities and taking responsibility for what we do.

## Management Philosophy

---

### Happiness First

KORLOY puts the happiness of our customers and employees ahead of everything and achieves both by raising the competitiveness in the world market.

# KORLOY starts its journey to the new world

## Company Overview

---

**KORLOY Inc. since 1966**

**Head Office** Holystar B/D, 326, Seocho-daero, Seocho-gu,  
Seoul, 06633, Republic of Korea

**Speciality** Insert, endmill, drill, tool holder,  
milling cutter, etc.

**Tel** +82-2-522-3181

**Fax** +82-2-522-3184

**Web** [www.korloy.com](http://www.korloy.com)

# KORLOY



## 1960~70

**1966**

Foundation of Corporation.

**1974**

Moved the factory to Cheongju.

**1974**

Began exporting worldwide.



## 1980

**1983**

Selected as a promising company (KIST).

**1987**

Established R&D Institute.

**1989**

Began KI21(KORLOY Identity 21) Campaign.



## 1990

**1990**

Awarded Productivity Grand Prize.

**1995**

Established Powder Processing Line & Alloy, Press, Sintering Line in Jincheon Factory.

**1997**

Certified to ISO9001.

**1999**

Awarded IR52 by the Minister of Science and Technology (AK Chipbreaker).



## 2000

**2000**

Awarded as the best R&D center by the president of South Korea.

**2004**

Selected as a highly competitive company (2000~2004).

**2007**

Certified as NET(New Excellent Technology).

**2009**

Certified to ISO14001.



## 2010

**2012**

Selected as HIDDEN CHAMPION business operator.

**2015**

Selected as the World champ business operator from KOTRA (2011~2015).

**2016**

Awarded an Order of Industrial Service Merit(Bronze Tower).

**2018**

Fostered export business for midsize companies(KOTRA).

**2019**

Received the best Taxpayer Award on the 53rd Taxpayer Day  
Inaugurated of Jung-Hyun YIM as the 8th President of KORLOY.



## 2020

**2022**

Relocation of the new building in Seocho-dong, Seoul.

**2023**

Awarded IR52 by the Minister of Science and Technology (PC3700).

**2023**

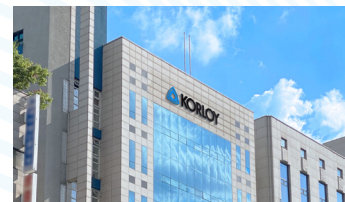
Material-Components-Equipment technology Specialized company Certification.

**2024**

Selected as a Corporate Philanthropy Leader (Community Chest of Korea)

**2024**

Awarded as 'Rising Leaders 300 enterprises' Ministry of Trade, Industry and Energy



## Mission

# Another Originality

Everyday we pursue another Originality for the Future.

---

### Mission Statement

---

Everyday we pursue more originality for the future.

Built on creativity, originality is the driving force for our sustainability, growth and development. The originality we pursue begins with creating innovative technology and new values, not just correcting or improving existing ones.

It is our true mission and is embedded in every aspect of our products, service and management. We believe it will lead us to customer satisfaction as well as our employees' happiness.



## Core Values



## KORLOY People



### Active

Pursuing the challenge of positive change



### Boundaryless

Cooperation without limits



### Creative

Productive imagination



### Diverse

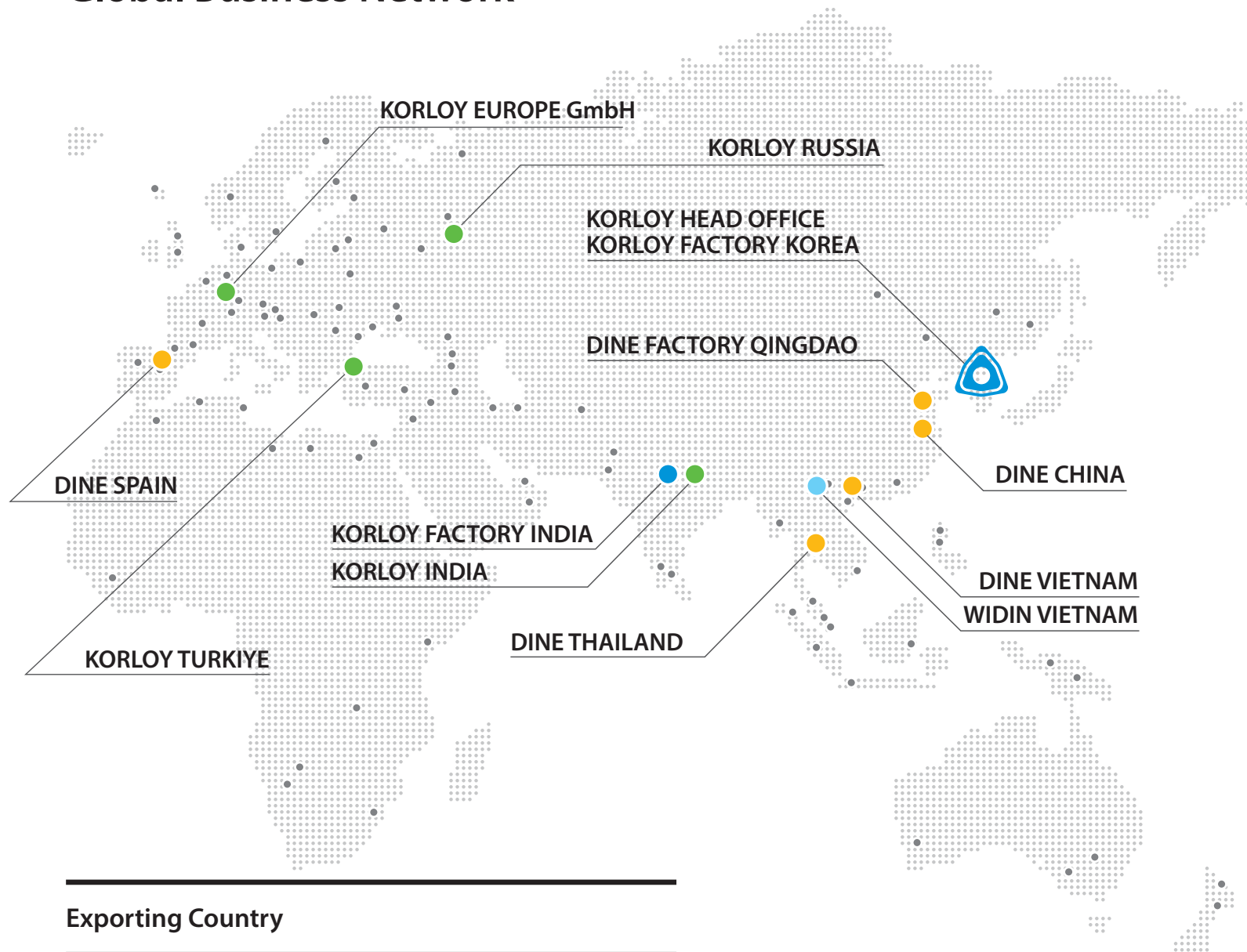
Respecting differences



### Expert

Special knowledge and skills

# Global Business Network



Albania, Algeria, Argentina, Australia, Austria, Belarus, Belgium, Bosnia, Brazil, Bulgaria, Canada, Chile, China, Colombia, Costa Rica, Croatia, Czech, Danmark, Ecuador, Egypt, Estonia, Faeroe Island, Finland, France, Germany, Greece, Guatemala, Hungary, Iceland, India, Indonesia, Iran, Ireland, Italy, Jordan, Kazakhstan, Kenya, Latvia, Lebanon, Lithuania, Luxembourg, Malaysia, Malta, Mexico, Mongolia, Netherlands, New Zealand, Norway, Pakistan, Panama, Peru, Philippines, Poland, Portugal, Romania, Russia, Saudi Arabia, Serbia, Singapore, Slovakia, Slovenia, South Africa, Spain, Sweden, Switzerland, Syria, Taiwan, Thailand, Tunisia, Turkiye, UAE, UK, Ukraine, Uruguay, USA, Uzbekistan, Venezuela







Head Office



R&D Institute



Cheongju Factory



Jincheon Factory



KORLOY America since 2008



KORLOY Europe since 2010



KORLOY India since 2012



KORLOY Brasil since 2014



KORLOY Turkiye since 2019



KORLOY Chile since 2019



KORLOY Russia since 2020



KORLOY Mexico since 2022





# KORLOY Network

---

## Head Office

Holystar B/D, 326, Seocho-daero, Seocho-gu,  
Seoul, 06633, Republic of Korea  
Tel : +82-2-522-3181 / Fax : +82-2-522-3184

## KORLOY AMERICA

620 Maple Avenue, Torrance, CA 90503, USA  
Toll Free : +1-888-711-0001  
Tel : +1-310-782-3800 / Fax : +1-310-782-3885

## KORLOY EUROPE

Gablonzer Str. 25-27, 61440 Oberursel, Germany  
Tel : +49-6171-27783-0 / Fax : +49-6171-27783-59

## KORLOY INDIA

Plot No. 415, Sector 8, IMT Manesar, Gurgaon 122051, Haryana, India  
Tel : +91-124-439-1790 / Fax : +91-124-405-0032

## KORLOY BRASIL

Av. Aruana 280, conj.12, WLC, Alphaville, Barueri,  
CEP06460-010, SP, Brasil  
Tel : +55-114-193-3810 / Fax : +55-114-193-5837

## KORLOY TURKIYE

Serifali Mahallesi, Burhan Sokak NO: 34 Dudullu OSB/Umraniye  
Istanbul, 34775, Turkiye  
Tel : +90-216-415-8874

## KORLOY CHILE

Av. Providencia 1650, Office 910, 7500027 Providencia-Santiago, Chile  
Tel : +56-229-295-490

## KORLOY RUSSIA

Premises 1/3, building 3, house 3, per Kapranova, vn.ter.g. municipal  
district Presnensky, 123242, Moscow, Russia  
Tel : +7-495-280-1458 / Fax : +7-495-280-1459

## KORLOY MEXICO

Avenida de las Ciencias, No. 3015, Interior 406, Juriquilla Santa Fe,  
C.P.76230 Querétaro, Querétaro, Mexico  
Tel : +52-442-193-3600

## KORLOY FACTORY INDIA

Plot NO. 415, Sector 8, IMT Manesar, Gurgaon 122051, Haryana, India  
Tel : +91-124-439-1818 / Fax : +91-124-405-0032

## Research & Development

# Creative R&D, Product Leadership

The KORLOY R&D institute aims to meet the highest demands of high-quality products without compromise. It has been successful with its innovative technology.



# Total Tooling Solution



## Production lines analysis

- Production lines analysis
- Improvement activity and Test Cutting
- Site improvement support programs



## Test Cutting

- Latest performance evaluation application
  - Test Cutting with actual workpieces
- Improvement activity and providing Test Cutting solutions



## Technical Consultancy

- Provision of real-time updates of the latest cutting tools
- Troubleshooting suggestions based on actual machining databases



## Tooling Proposal

- New processing lines' tools selection
  - Tool life estimation
  - Predicting possible issues and proposing countermeasure
- ▶ · Try - out  
Re-Tooling customer-used tools



## Knowledge Training

- Latest cutting tool training
- Training and service provision for machining technology

### KTEC KORLOY Technical Education Center

- Employee training: Theory and practical sessions
- Conduction of test cutting
- Providing machining solutions





## Product Index

# Up-to-date Technology

### Products / 16

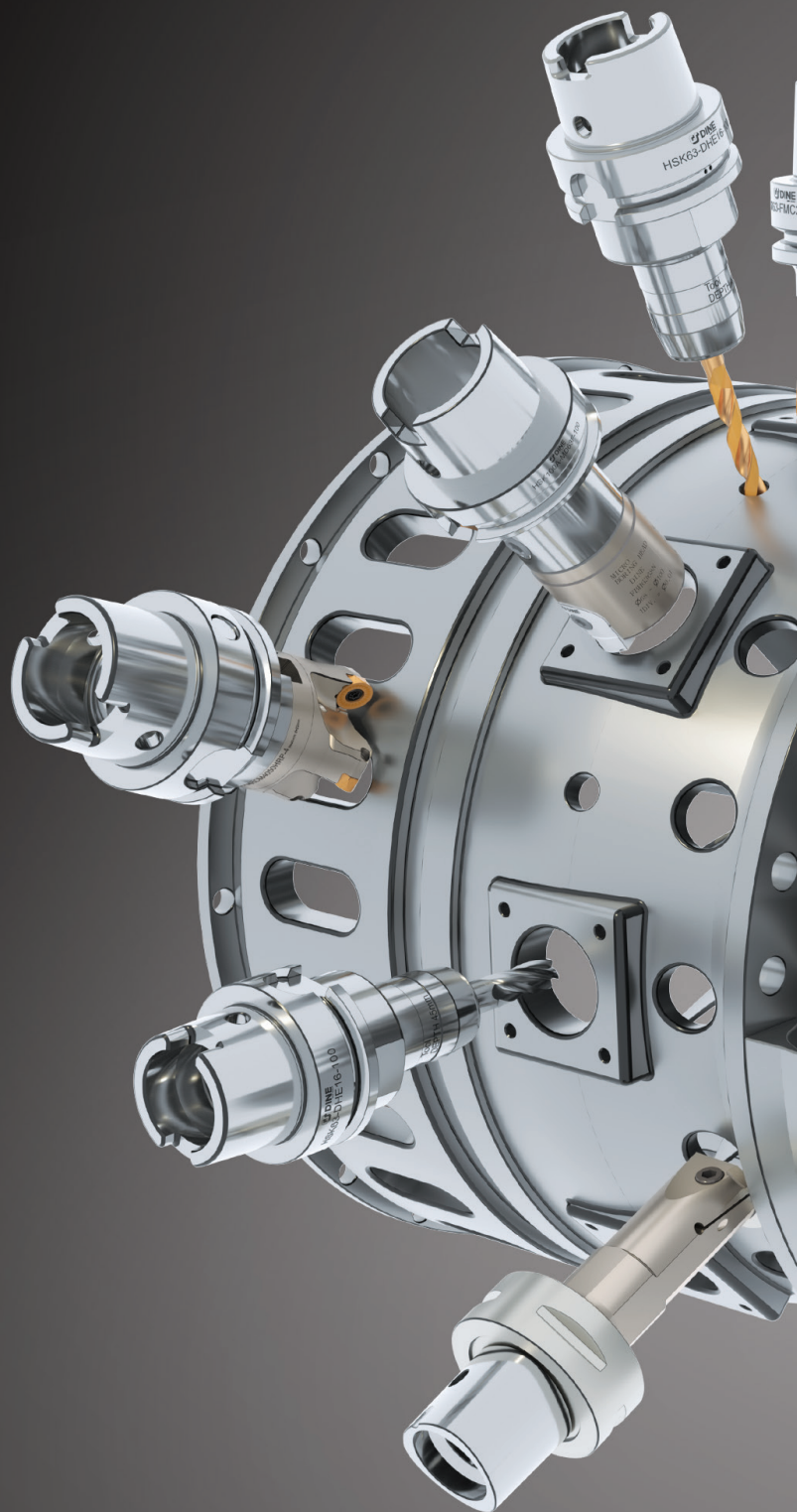
- Inserts
- Tool holders
- Milling cutters
- Solid endmills
- Solid drills
- Indexable endmills
- Indexable drills
- Tooling systems

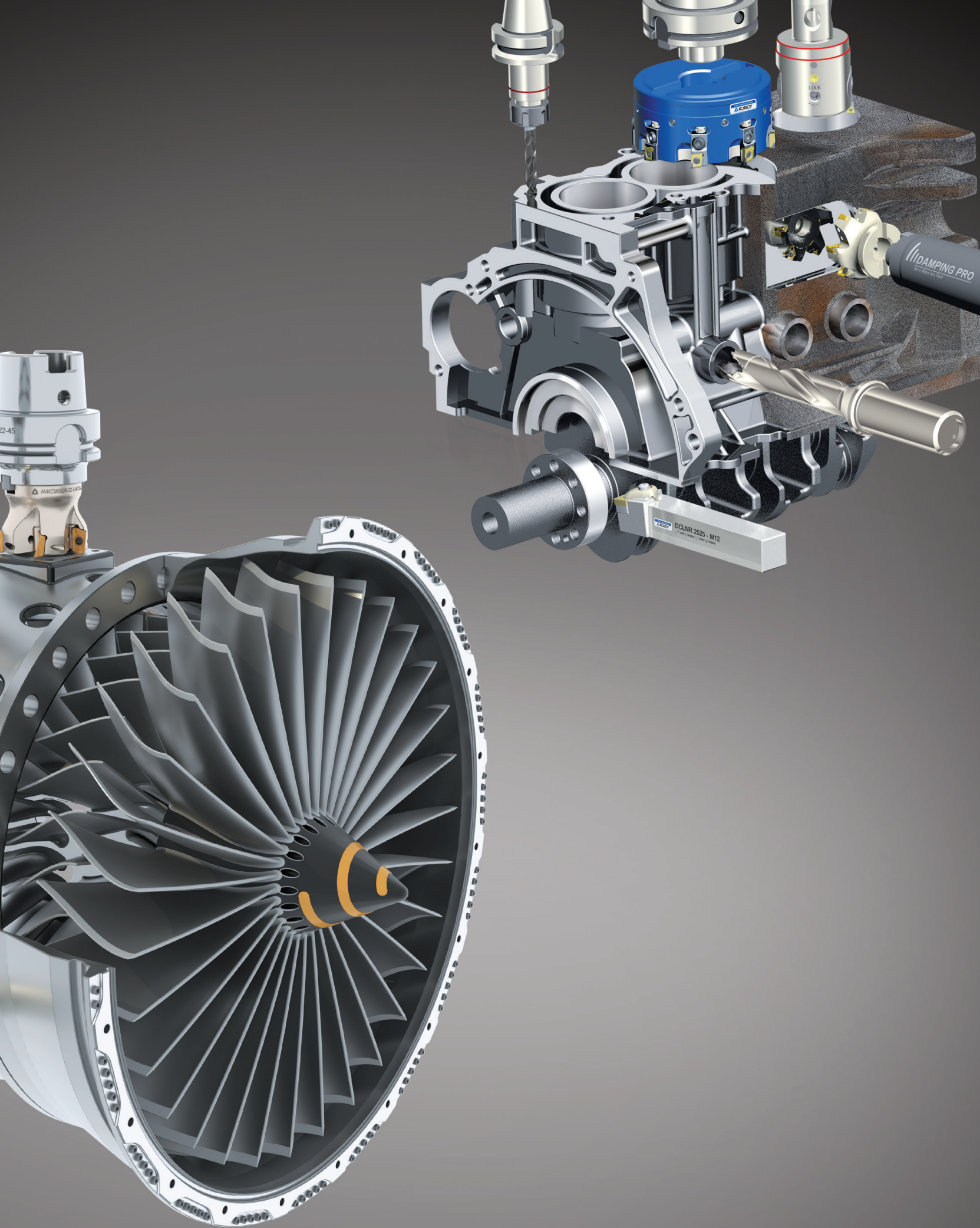
### Industry Application / 20

- Automotive
- Aerospace
- Mold & die
- Railway
- Shipbuilding

### Special Industry Application / 24

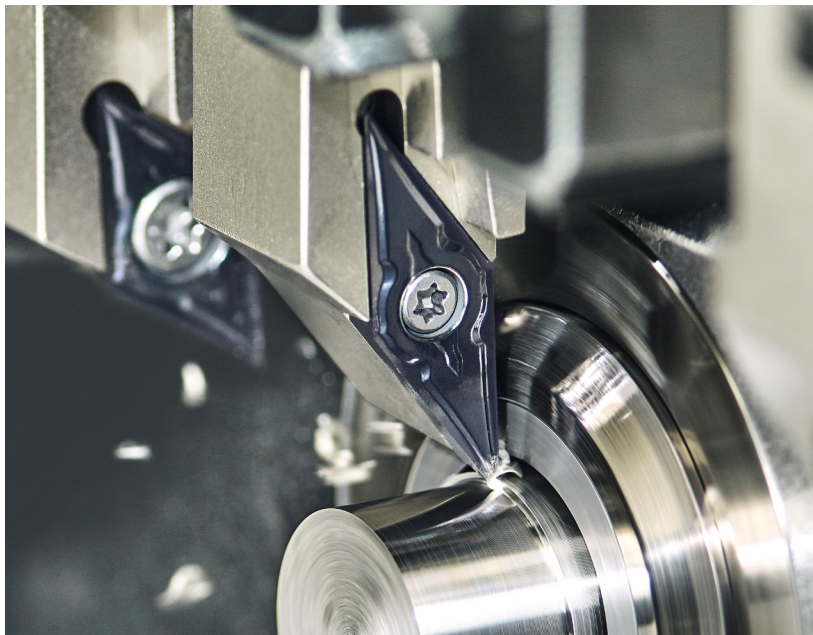
- Pipe
- Gear
- Bearing
- Medical
- Roll
- IT
- Power generation





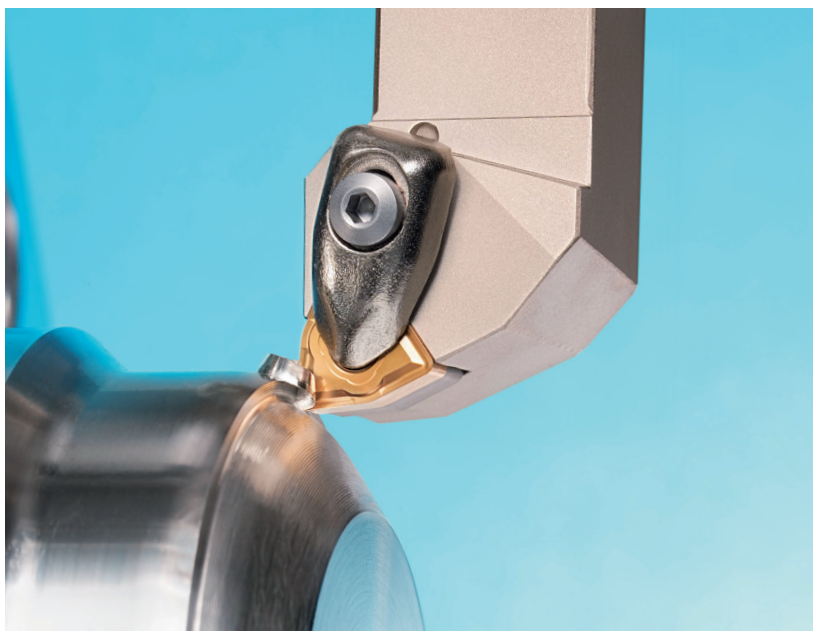
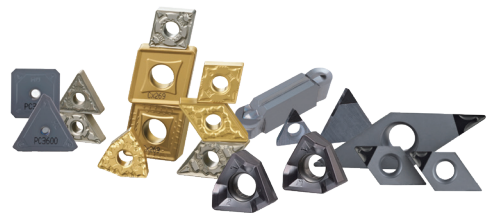


## Products



### INSERTS

Inserts for turning, milling and multi-purpose with a full line-up of ISO standards and special tools.



### TOOL HOLDERS

Tool holders featuring high rigidity clamping systems with a full line-up of ISO standard and special tools.

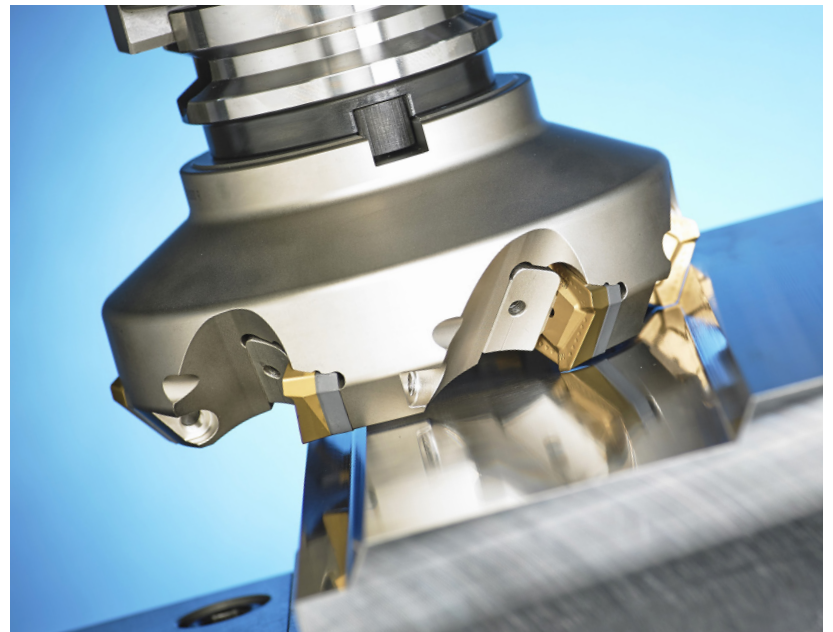


# Innovative Product Development

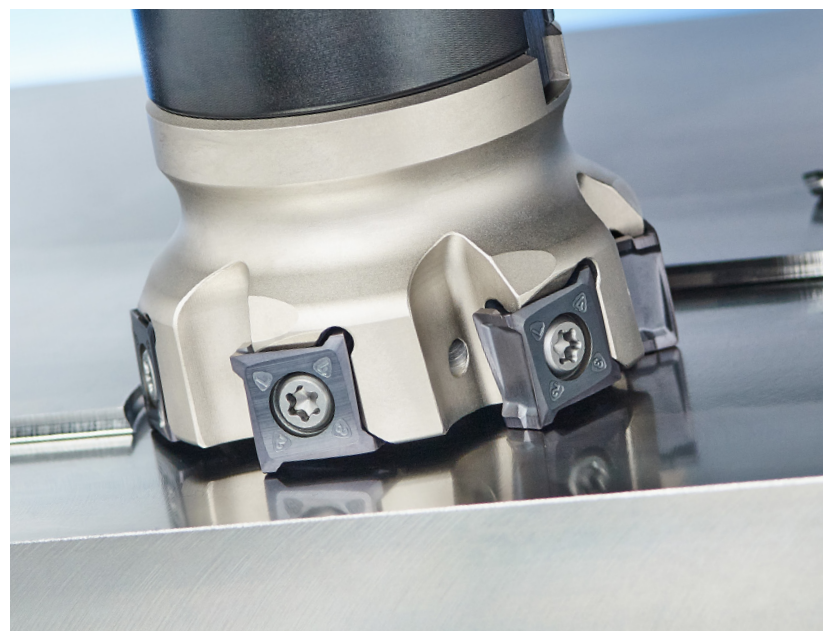
## MILLING CUTTERS

Milling cutters for facing, shouldering, slotting and any other milling requirements.

### 1. ISO Standard type

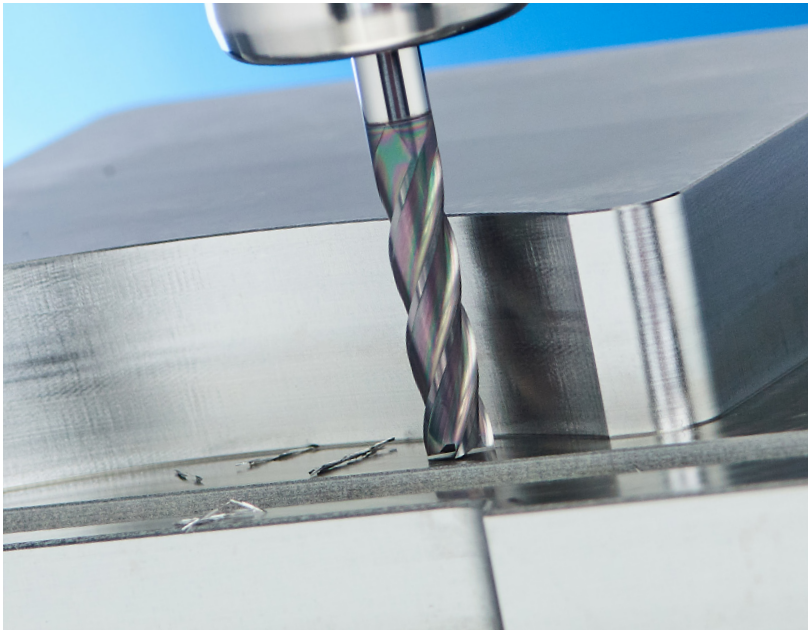


### 2. KORLOY exclusive type





## Products



### SOLID ENDMILLS

For a wide range of applications, from machining hard mold & die, to high precision IT parts and devices.



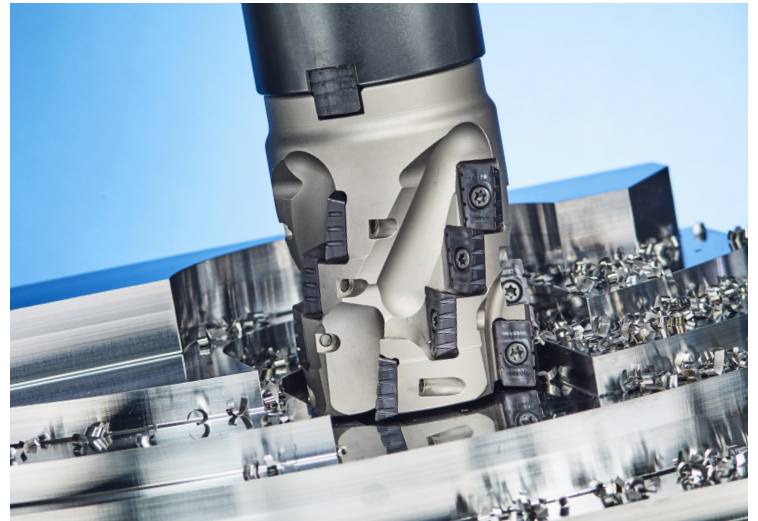
### SOLID DRILLS

For high productivity hole making and deep holes with high precision.



## INDEXABLE ENDMILLS

With interchangeable inserts for economical multi-purpose machining and superior performance in hard-to-cut materials at high speeds.



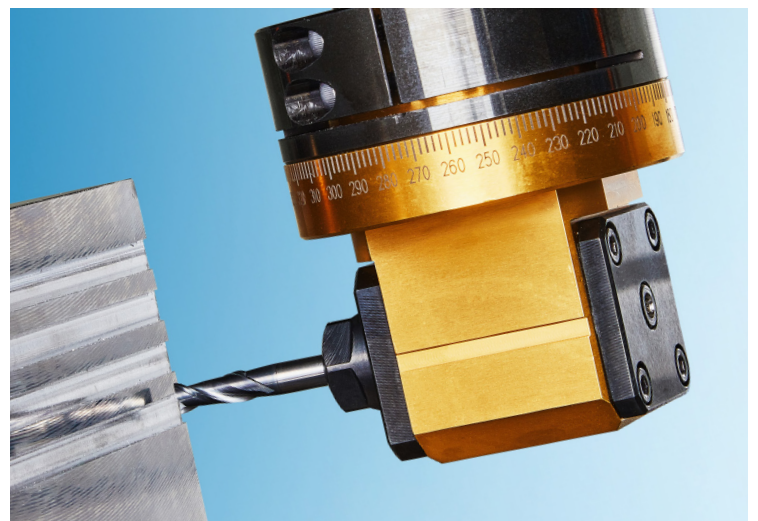
## INDEXABLE DRILLS

For high feed machining, hard-to-cut materials, or multi-purpose.



## TOOLING SYSTEMS

Total tooling system capability, covering high speed and high precision applications.

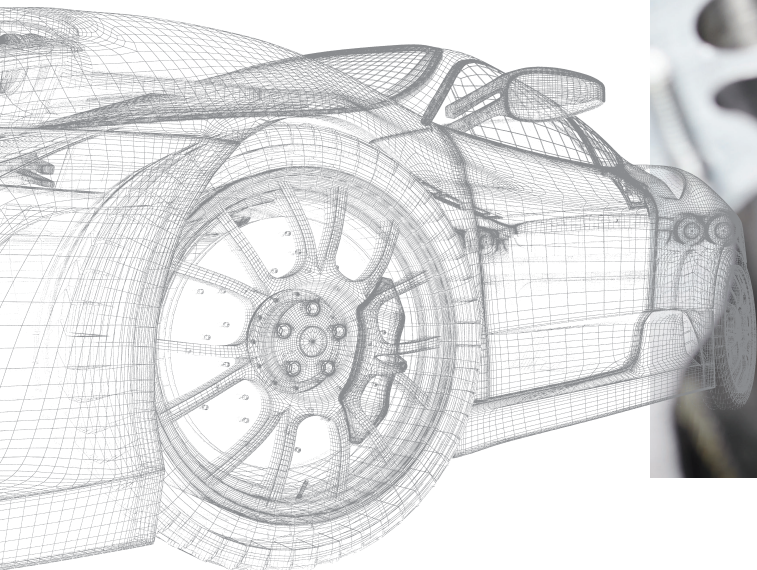
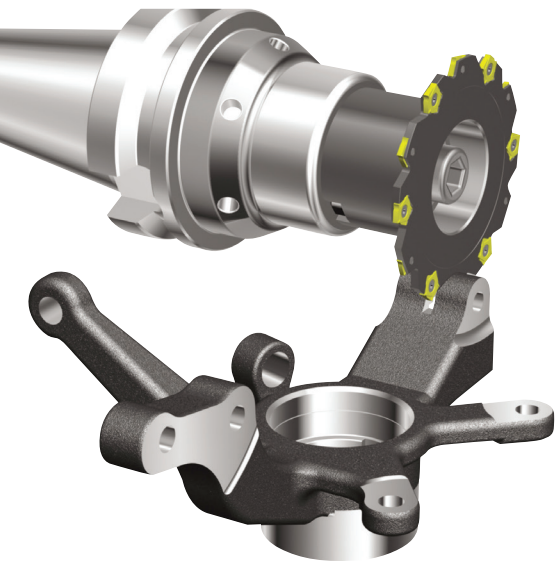




## Industry Applications

### Automotive

A car is composed of over 20,000 parts. KORLOY manufactures cutting tools for most major systems, including crank shafts, cylinder blocks, piston heads, and more.



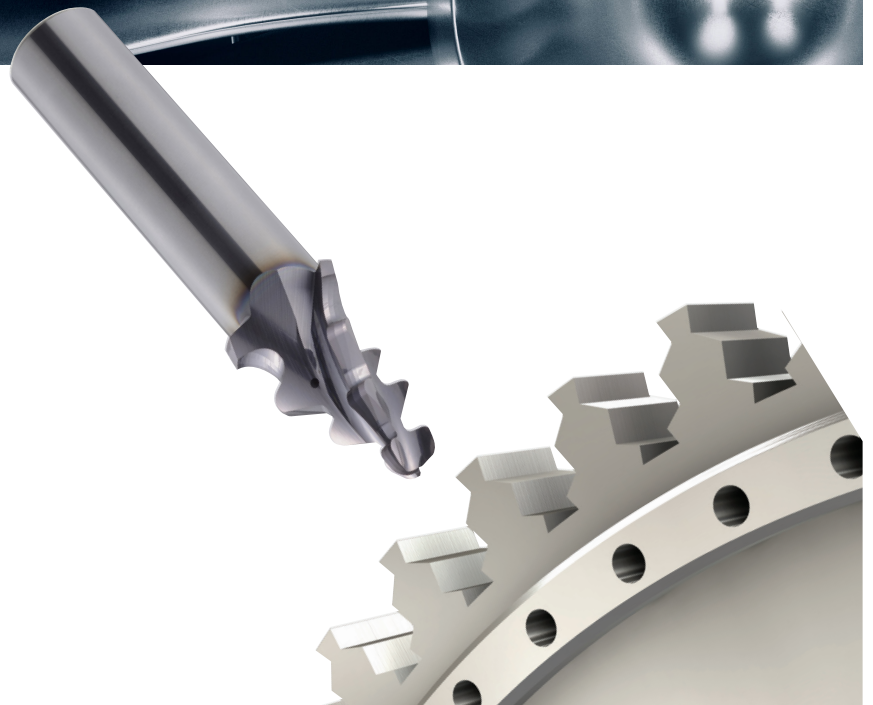


# Highly Efficient Tooling System



## Aerospace

Specialized cutting tool technology for Aerospace materials for high productivity, high precision machining of engine, turbine, wings, frame, landing gear and other aerospace components.





## Industry Applications

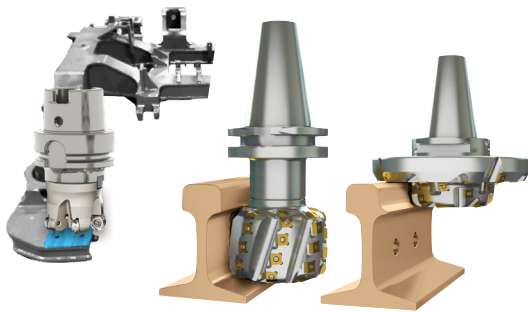
### Mold & Die

The mold and die industries are a large part of the national infrastructure, providing the foundation for manufacturing of automobiles, semiconductors, and so many others. KORLOY manufactures a large variety of cutting tools for machining molds in press, injection, die cast, and forging.



## Railroad & Rail Wheel

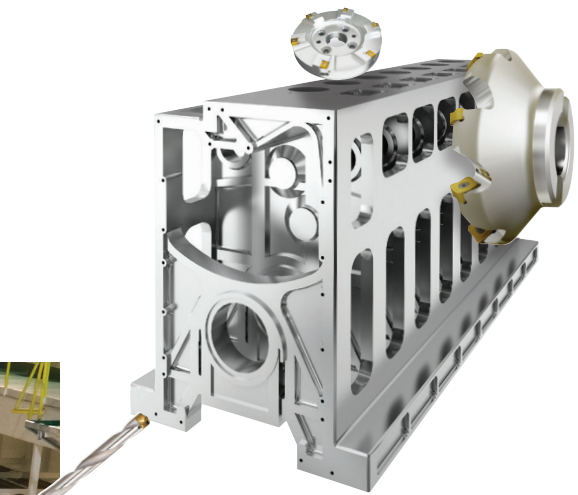
KORLOY's accumulated know-how and experience in the railroad industry are applied to produce best-in-class cutting tools for machining rail separators, crossings, joints, wheels, and more.



## Shipbuilding

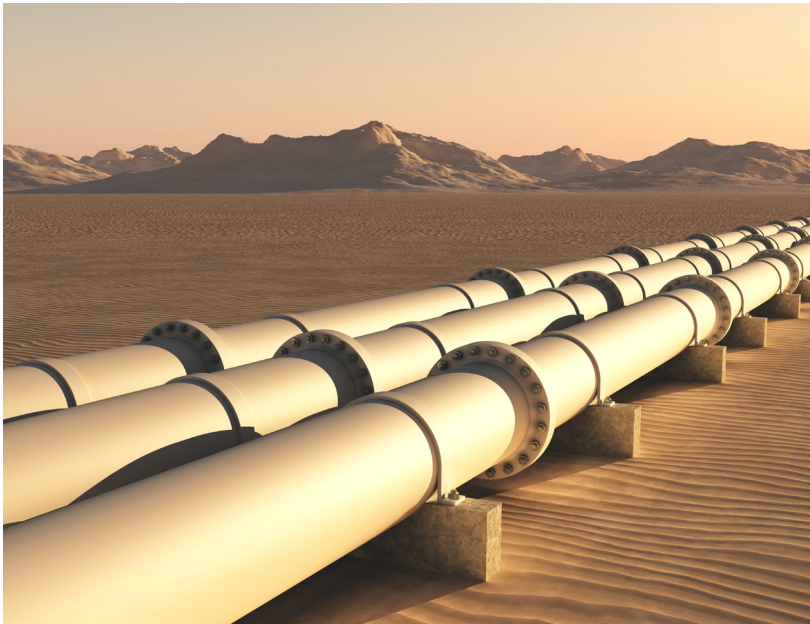
The shipbuilding industry has improved rapidly throughout human history.

KORLOY's high-tech cutting tool solutions are used to efficiently machine cylinder blocks, crankshafts, propellers, and other ship parts.



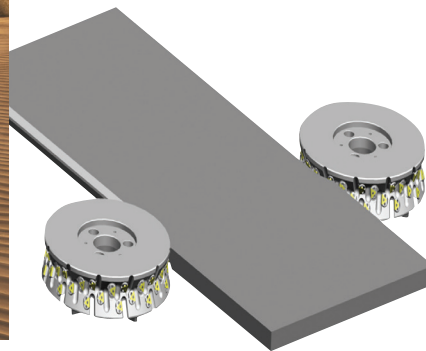


## Special Industry Applications



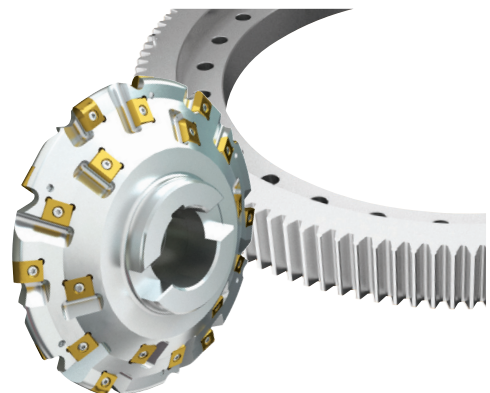
### Pipe Machining

Total tooling for pipe machining such as edge milling, removing bids, end facing, and more.



### Gear Machining

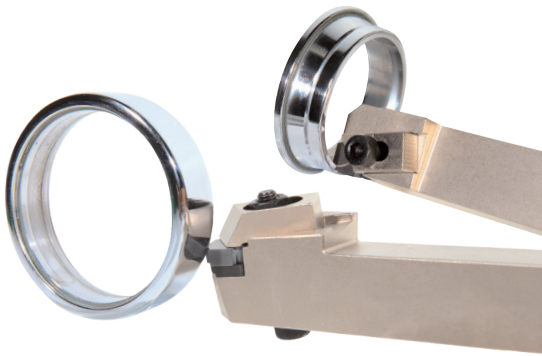
Total tooling for machining spur gears, helical gears, herringbone gears, and rack gears.



# Our deep knowledge in special industries

## Bearing Machining

Total tooling for bearing's inner and outer parts including chamfering, shield, and raceway machining.



## Medical Industry

The rigorous demands of the medical parts and device industry require hard-to-cut materials like titanium. KORLOY has developed specialized cutting tools that meet or exceed the demand for productivity, reliability, and precision.



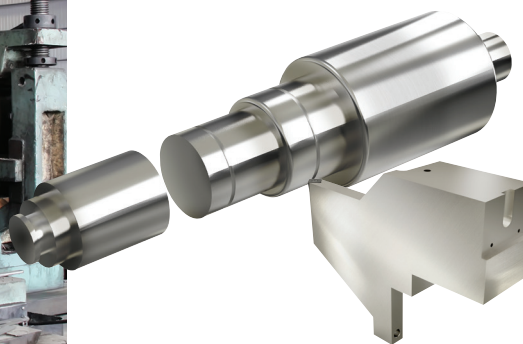


## Special Industry Applications



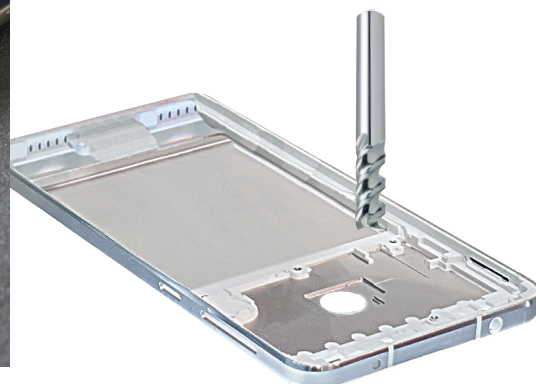
### Roll Machining

Total tooling for machining a variety of rolls that can bear high pressure.



### Information Technology

High precision cutting tools for machining IT devices such as smart phones, tablet PCs, and more.



## Power Generation

Highly durable parts are required in generating plants of wind, gas and nuclear power. KORLOY has optimized tooling solutions for the efficient machining of these parts.





## ESG (Corporate Sustainability Management)

KORLOY is committed to ESG management for a better future.

---

### ESG Statement

---

KORLOY will contribute to the advancement of related industries, create employment, and fulfill its role and responsibility in contributing to the development of the country and local communities by continuously providing ESG management products and services in the cemented carbide cutting tool industry for the creation of economic, social, and environmental value in human life.



# ESG

## Corporate Sustainability Management



### Environment

Based on the founding philosophy of social contribution and entrepreneurship, KORLOY will strive to become an eco-friendly manufacturer that takes a leading role in improving climate change and other environmental issues in order to create a pleasant and clean future.



### Social

KORLOY will strive to ensure the happiness and diversity of all stakeholders, respect their rights as human beings, and above all, work towards creating a safe and healthy work environment.



### Governance

KORLOY will strive to become an exemplary corporation with ethical management, practicing love and volunteering in local communities for sustainable management, through sound corporate governance.

## Stakeholder communication



#### Customer

Customer satisfaction survey, Customer counseling, Technical course, Stakeholder survey



#### Member

Evaluation, coaching program, Joint labor-management conference, Open-i, Stakeholder survey expansion



#### Investor

Shareholders meeting, board of directors, joint labor-management conference



#### Cooperator

Purchasing, Ordering system(KPOS), O/S regular meeting, Cooperator individual visit, Cooperator regular meeting



#### local community

Supporting Youth Together activities, Charity(Coworking with Local Government, Religious organizations)



## Contribution to Society · Happiness First



### Sustainability Management

- Partnership with customers, affiliated companies, stockholders and all the other people with common interests.



### Environmental and Quality Management

- Certified to KS A / ISO9001
- Certified to AS9100 - Quality Management System for the Aerospace Industry
- Certified to ISO14001 - Environmental Management Systems
- Certified to ISO45001 - Occupational Health and Safety Assessment Series



### Community Involvement

#### Charity Events

- Charitable campaign for people in need, by the company and all employees.
- KORLOY's executives periodically make donations to the Youth Together Special Education Center.

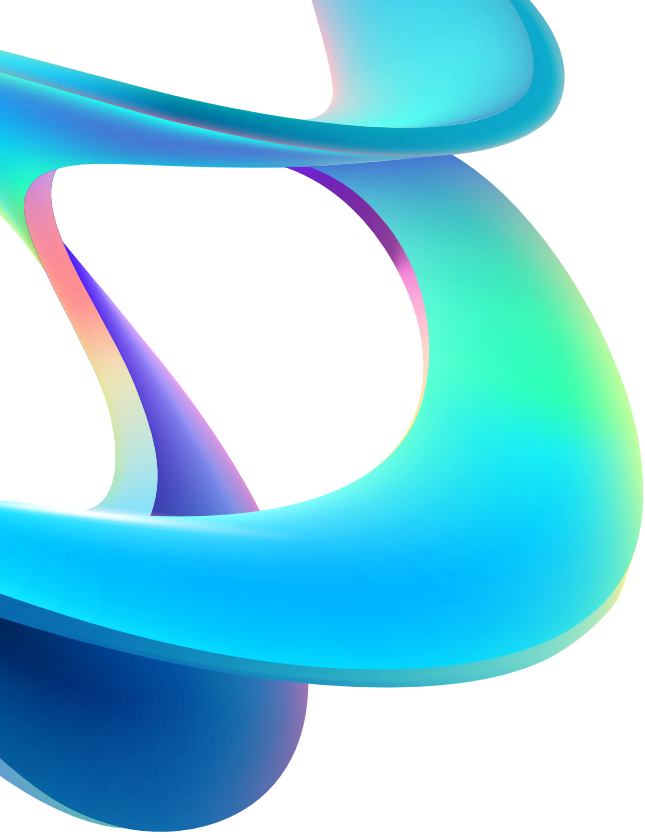
#### Voluntary Service for

- Community Chest of Korea
- Youth Together
- Saint Vincentio's house (a sanatorium)
- Child-headed families
- Low income and elderly people in need
- Multicultural families



# Happy Companionship, Lifelong Partner





***[www.korloy.com](http://www.korloy.com)***

